



**New**

J111

**Hairy and hairless skin model**

This 70X relief model compares a section of hairy skin to one without hair. All structures, including sensitive corpuscles, hair follicles, sebaceous and sweat glands, are shown in great detail. Mounted on board.

**Size: 53 x 38 x 6 cm , Weight: 2.7 kg**  
**Ref.no. J111**



**Skin section**

This 70X relief model shows the main structures through 3 layers of the hairy skin: hair follicles, sebaceous and sweat glands, erector muscles, sensitive corpuscles, nerves and blood vessels are well defined.

**Size: 33 x 23 x 6 cm**  
**Weight: 1.4 kg**  
**Ref.no. J110**

**New**



**New**

J213

**Skin block model**

This model of a human skin in about 50 times life size shows 3 dimensional the different skin layers and anatomical structures. In addition to nerves and blood vessels the model shows sweat glands, sebaceous glands, hair follicles, erector muscles, Pacinian corpuscles and much more.

**Size: 20 x 10 x 20 cm**  
**Weight: 850 g**  
**Ref.no. J213**



J60

**Nail model, 5 times full size**

This approximately 5 times enlarged model of the terminal part of a typical digit with its associated bone structure shows three sectional views of the nail root and bed, germinative region and bone. Mounted on base.

**Size: 25.5 x 12.5 x 10 cm**  
**Ref.no. J60**



**Skin model, 70 times life size**

This model is composed of 2 parts and shows the structure of the human skin in three dimensions. Anatomical structures are shown in detail, including the hair follicles; sebaceous glands; sweat glands; erector muscles, Pacinian corpuscles, nerves; and blood vessels. The different layers of the skin are clearly defined. A portion of a hair shaft can be removed to show internal details. Mounted on base.

**Size: 25 x 18 x 28 cm**  
**Weight: approx. 1.5 kg**  
**Ref.no. J113**



**New**

**Skin-hair-nail desktop model**

With this model it is easy to compare the structures of hairy and hairless skin: sensitive corpuscles, blood vessels, sweat gland, nerves, hair and hair root. Additionally a nail cross section model shows nail bed, nail plate and nail root. An enlarged hair root completes the model.

**Size: 10 x 12 x 11 cm**  
**Weight: 0,2 kg**  
**Ref.no. J214**



J55

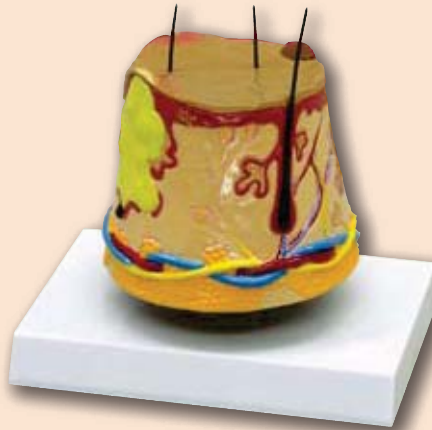
### Skin Cancer Model

This model features three cancerous conditions;

- NBC (Nodular Basal Cell),
- MM (Malignant Melanoma),
- MBC (Morpheic Basal Cell), and three noncancerous conditions;
- DN (Dyplastic Nevi),
- KA (Keratoacanthoma) with basal layer and dermal layer cross-section detail.

**Size: 11.5 x 11.5 x 3 cm**

**Ref.no. J55**



J50

### Skin Acne Model

Enlarged cross section of skin. Relief detail displays acne pistule (pimple) on one side and open comedo (Blackhead) on backside. Also shown are Epidermis, Dermis & Subcutaneous tissue details of normal skin.

**Size: 10 x 10 x 11.5 cm**

**Ref.no. J50**



J66

### Burned Skin Model

This model, approx. 30 times enlarged, compares normal skin with first, second and third degree burnt skin, showing also the subsequent pathological changes. The first level of injury shows scarfskin hurt and erythema; the second one includes hypoderma skin hurt and vesicles, the third one reveals a subcutaneous damage. Mounted on base.

**Size: 19.5 x 14 x 5 x 10 cm**

**Weight: 0,5 kg**

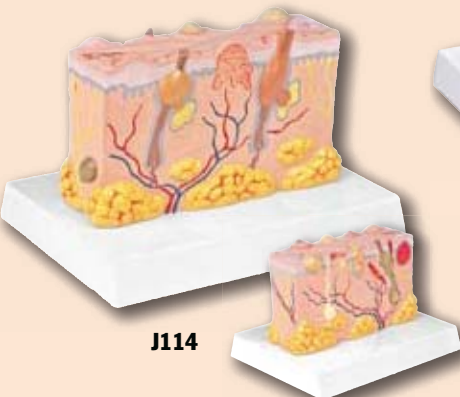
**Ref.no. J66**

### Skin Model showing normal anatomy and skin acne

Enlarged 2-sided skin cross-section. The acne side of the model displays 3 conditions; Whitehead, Blackhead and Pustule/Cyst. The reverse side illustrates normal skin anatomy. With stand.

**Size: 15 x 10 x 7 cm**

**Ref.no. J51**



J114

### Pathological Model of the Skin

This model, approximately 30X life size, features, on the one side, detailed and realistic depictions of closed and open acne lesions, 2 primary lesions (papule and macule), 1 deeper lesion, (nodule) and an abrasion. On the other side the model shows cyst, fissure, pustule, ulcer, scale and blister. All the pathologies are showed separately in the model with a realistic representation of their morphology.

Mounted on base.

**Size: 16.5 x 12 x 11.5 cm**

**Weight: 0.4 kg**

**Ref.no. J114**



J51

New



J65

New



New

### Hair Model

This item is composed of four different models on the same base: the first one is a longitudinal section, 100X life size, of the hair root. The other three models are cross sections, greatly enlarged, of the hair shaft, hair root and hair bulb. The use of unauthentic colours makes it easy to identify all the different layers, such as external and internal root sheath, cuticle and cortex, that make up the hair. Mounted on board.

**Size: 53 x 38 x 11 cm**

**Weight: approx 950g**

**Ref.no. J61**

### Skin Model showing normal anatomy and burn

Enlarged 2-sided skin cross-section. The burn side of the model shows indication of 1st, 2nd and 3rd degree burns. The reverse side illustrates normal skin anatomy. With stand.

**Size: 15 x 10 x 7 cm**

**Ref.no. J65**