

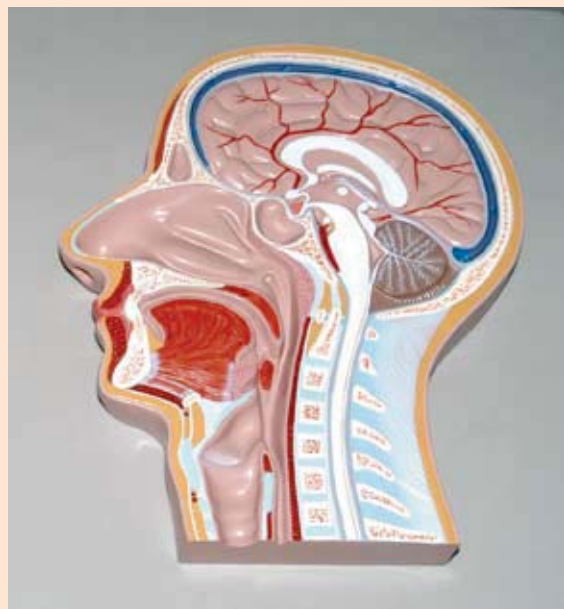
**C60**

**Head and Neck, 5-part**

Representation of a head, medially divided. The skin and facial muscles of the right outer half are removed to show the deeper structures. Eyeball, bone cover over the sinus maxillaries and right tongue half are removable.

**Size: 38 x 40 x 28 cm**

**Ref.no. C60**



**Median section of the head (relief model)**

Life size representation of the superficial and the internal structures of the head and neck. This relief model shows all relevant structures of the human head in great detail. Mounted on board.

**Size: 33 x 23 x 5 cm**

**Weight: approx. 1.1 kg**

**Ref.no. C112**



**Frontal and median section of the head (relief model)**

Life size representation of the superficial and the internal structures of the head and neck. Comparison between frontal and median sections provides a superior understanding of the anatomical structures of the head and neck. Mounted on board.

**Size: 53 x 38 x 6 cm**

**Weight: approx. 1.8 kg**

**Ref.no. C113**



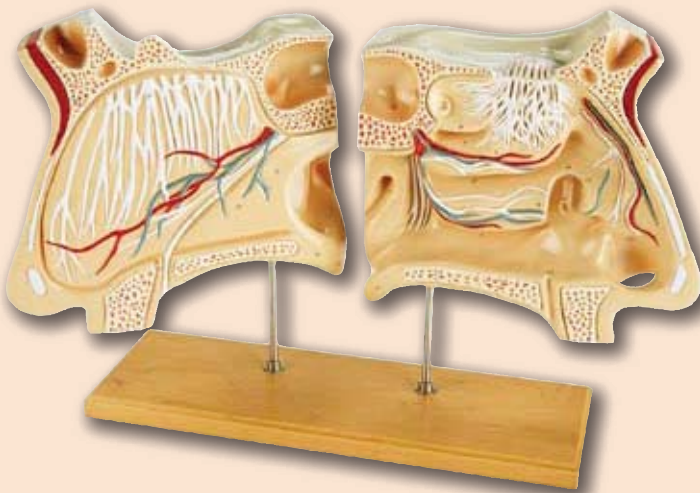
**C80**

**Nose and sinus model**

This cut-away model depicts a near median section through the nose and nasal passages. Details include nasal cavity, soft & hard palate, uvula and pharyngeal tonsil. Back side shows ethmoid and maxillary sinus cavities.

**Size: 12 x 2 x 14 cm**

**Ref.no. C80**



**C70**

**Nose and Olfactory organ, 4 times life size**

The nose halves are medially divided, from the base of the skull to the gum.

**Shown are:**

- Nose septum with vessels and nerves (right side)
- All structures of the inner nasal cavity (left side)
- Sinus and the opening of the Eustachian tube (left side)

Parts are numbered and the model is mounted on a wooden base.

**Ref.no. C70**



**C182**

**Nasal cavity, 3 parts**

3X life size; model shows a medial section of the nasal cavity. The nasal septum and part of the olfactory epithelium are removable to expose deep internal structures. Mounted on base.

**Size: 23.5 x 6.5 x 28.5 cm**

**Weight: approx. 1.3 kg**

**Ref.no. C182**

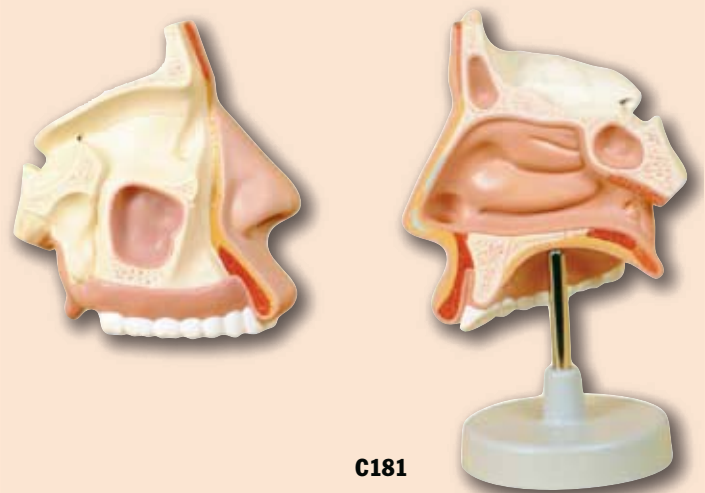


**LM05**

**Transparent model nose**

Using this transparent model, it is possible to understand at a glance and explain simply the complex structure of the nasal cavities. The three-part model can be taken apart (two halves and a dividing plate). A versatile model for patient information or medical training. The model is flexible and can be used for the most diverse exercises. Very good also for planning of surgery.

**Ref.no. LM05**



**C181**

**Nasal cavity**

This life size model shows a section of the nasal cavity. Mounted on base.

**Size: 16.5 x 4.5 x 14.5 cm**

**Weight: 0.4 kg**

**Ref.no. C181**