



Model skull, 3-part

Natural casting of a human skull. Can be dismantled into roof of skull, base of skull and mandible. All anatomical details are accurately reproduced. The teeth correspond to natural dentition with respect to tooth position and interdental spaces. The mandible is flexibly mounted.

Size: 20 x 13.5 x 15.5 cm

Weight: 0.7 kg

Art.Nr. 4503

4503



Model skull, 3-part, numbered

Model as 4503, but in addition with numbering of the individual skull bones. Includes nomenclature.

Size: 20 x 13.5 x 15.5 cm

Weight: 0.7 kg

Ref.no. 4505

4505

Model skull, 3-part, with muscle marking

Model as 4503, but in addition with marking of the muscle origins and insertion points. Includes description.

Size: 20 x 13.5 x 15.5 cm

Weight: 0.7 kg

Ref.no. 4509

4509

Didactical skull, 3 part

Actual cast of a real human skull with calvarium cut and removable lower jaw. For easier understanding the individual skull bones are painted in different colours.

A perfect model for learning the bony structures of the skull. All bones are numbered and listed in a key card.

Size: 20 x 14 x 16 cm

Weight: 0.7 kg

Art.Nr. 4508

4508



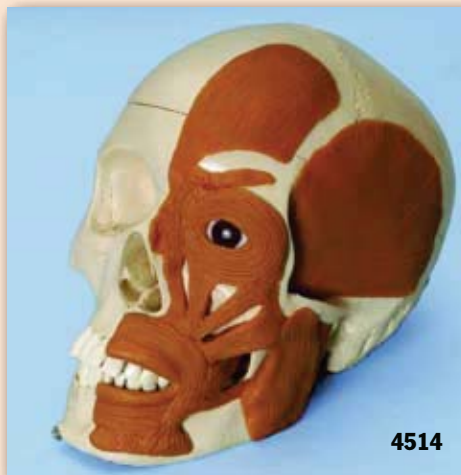
Dental skull, 4-part

The teeth in the upper and lower jaw can be extracted and reinserted. The mandible is open and shows roots, spongiosa, nerve canal and an impacted wisdom tooth.

Size: 22 x 13 x 17 cm

Weight: 0.7 kg

Ref.no. 4513

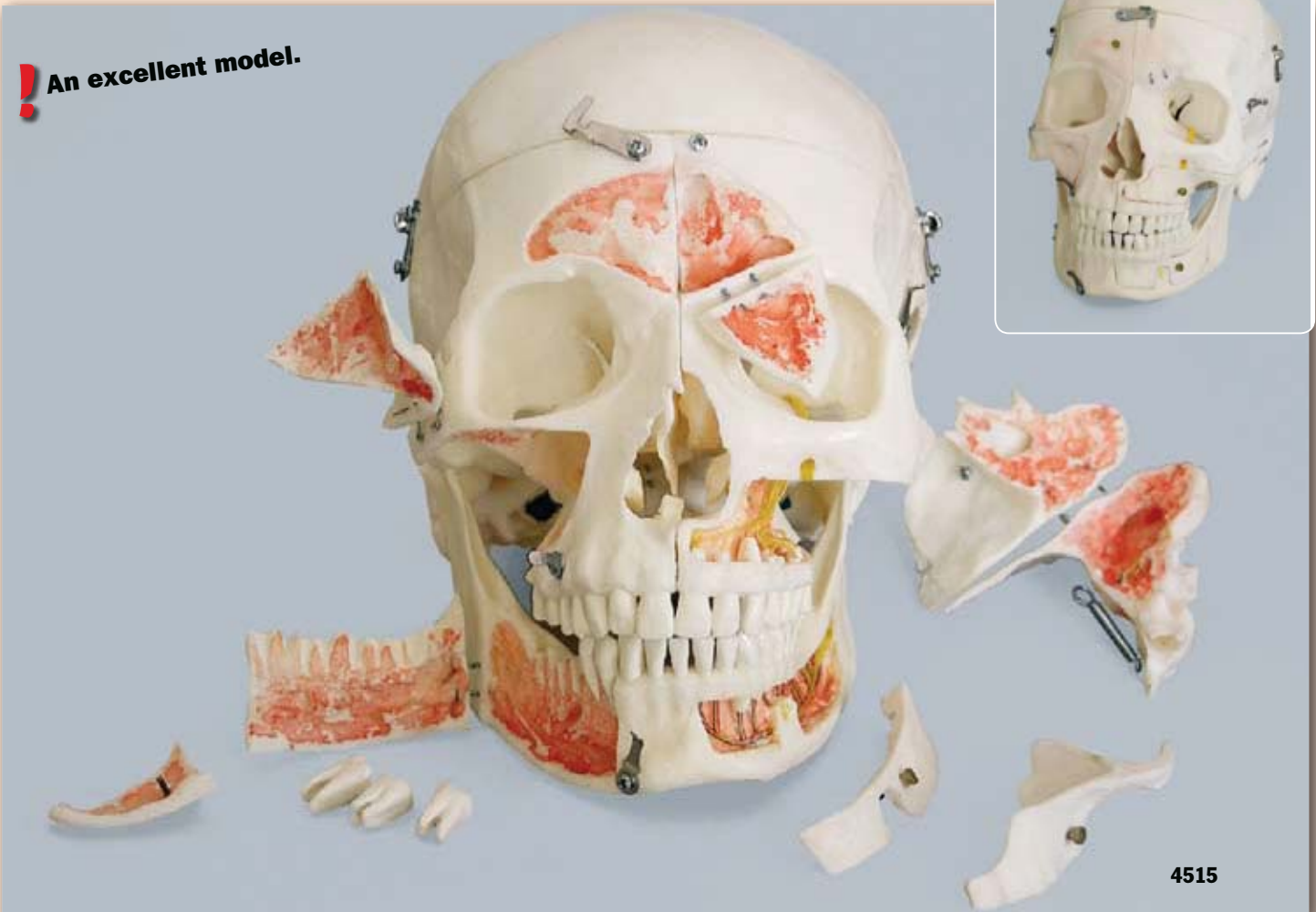


Skull with musculature

This model is unique in the world and shows the main muscles of the head. The muscles are made of flexible material which means movements of the TMJ can be demonstrated. The skull is an actual cast of a real human skull. The teeth in the upper and lower mandible can be extracted and reinserted. The mandible is open and shows roots, spongiosa, nerve canal and an impacted wisdom tooth.

Size: 22 x 13 x 17 cm

Ref.no. 4514



Demonstration skull, 14 parts

A selected quality human skull was chosen for this model, dissectible into 14 parts: A horizontal section of the skull exposes the cranial cavity in which the course of the meningeal vessels, the venous sinuses and the internal carotid artery are indicated in colour. A sagittal section exposes the structure of the nasal cavity including frontal and sphenoidal sinuses. The frontal sinus is further dissected on one side by a bony section, on the other side it is resected in its outline. The temporal bone is removable and sectioned into two parts presenting internal ear in full view. The mandible is movable and can be taken off. The mandible and the maxillae are opened on one side presenting the roots of teeth with dental vessels and nerves reinstated in colour. On the other side the maxillae can be opened.

Size: 20 x 14 x 16 cm, weight: 0.7 kg

Ref.no. 4515



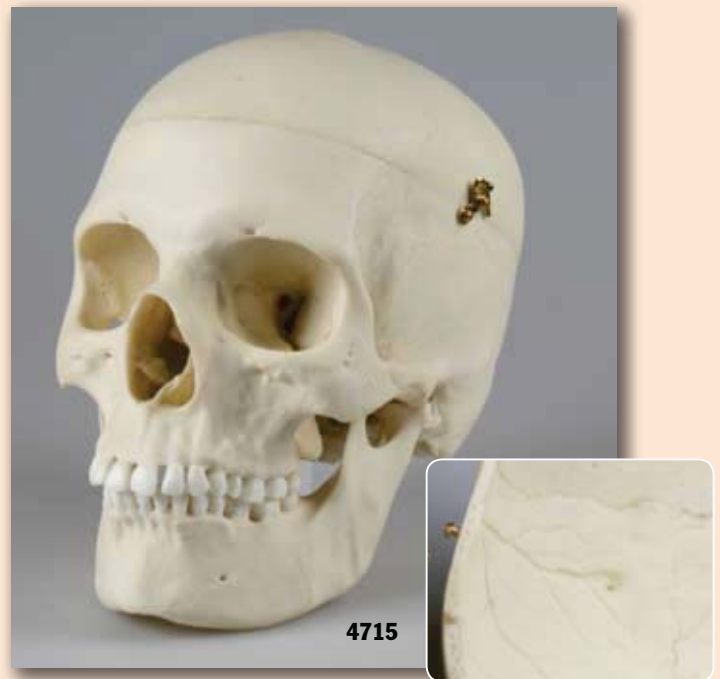
Adult skull, male

First class actual cast of a male human adult in extraordinary high detail. Due to the very special production technology even smallest details are reproduced and the model looks and feels almost like a real human skull. The structures are carefully painted to improve the visibility and make the model look like a real skull. Because of its high quality this skull is difficult to identify as a plastic replica.

Size: 21.5 x 14 x 21.5 cm

Weight: 0.8 kg

Ref.no. 4710



Adult skull, female

First class actual cast of a female human adult in extraordinary high detail. Due to the very special production technology even smallest details are reproduced and the model looks and feels almost like a real human skull. The structures are carefully painted to improve the visibility and make the model look like a real skull. Because of its high quality this skull is difficult to identify as a plastic replica.

Size: 19 x 12 x 16 cm

Weight: 0.8 kg

Ref.no. 4715



Adolescent skull, female

First class actual cast of a female human adolescent in extraordinary high detail. Due to the very special production technology even smallest details are reproduced and the model looks and feels almost like a real human skull. The structures are carefully painted to improve the visibility and make the model look like a real skull. Because of its high quality this skull is difficult to identify as a plastic replica. Two part model.

Size: 16.5 x 11 x 16 cm

Weight: 0.4 kg

Ref.no. 4720



Child skull, 12 year old

First class actual cast of a female human 12 year old child in extraordinary high detail. Due to the very special production technology even smallest details are reproduced and the model looks and feels almost like a real human skull. The structures are carefully painted to improve the visibility and make the model look like a real skull. Because of its high quality this skull is difficult to identify as a plastic replica. Two part model, upper and lower jaw opened.

Size: 18 x 10 x 15 cm

Weight: 0.3 kg

Ref.no. 4725



Child Skull, 9 year old

First class actual cast of a 9 year old child in extraordinary high detail. Due to the very special production technology even smallest details are reproduced and the model looks and feels almost like a real human skull.

Size: 19 x 13 x 14 cm
Ref.no. 4779



Child Skull, 5 year old

First class actual cast of a 5 year old child in extraordinary high detail. Due to the very special production technology even smallest details are reproduced and the model looks and feels almost like a real human skull.

Size: 16.5 x 11 x 14 cm
Ref.no. 4730



Child Skull, 4 year old

First class actual cast of a 4 year old child in extraordinary high detail. Due to the very special production technology even smallest details are reproduced and the model looks and feels almost like a real human skull.

Size: 18 x 12 x 13 cm
Ref.no. 4774



Child skull, 3 year old

First class actual cast of a 3 year old child in extraordinary high detail. This skull also shows numerous Wormian (sutural) bones found along the lambdoid suture. The epipteric bone, which is a Wormian bone found at the anatomical landmark known as the pterion is also shown.

Size: 16.5 x 12 x 13 cm
Ref.no. 4776



Child skull, 1 1/2 year old

First class actual cast of a 1 1/2 year old child in extraordinary high detail. Due to the very special production technology even smallest details are reproduced and the model looks and feels almost like a real human skull.

Size: 16 x 12 x 13 cm
Ref.no. 4775



Child skull, 15 months old

First class actual cast of a 15 months old child in extraordinary high detail. Due to the very special production technology even smallest details are reproduced and the model looks and feels almost like a real human skull.

Size: 15 x 11 x 14.5 cm
Ref.no. 4740



Child skull, 14 months old

First class actual cast of a 14 months old child in extraordinary high detail. Due to the very special production technology even smallest details are reproduced and the model looks and feels almost like a real human skull.

Size: 15 x 11 x 13 cm
Ref.no. 4777

Child Skull, 1 year old
 First class actual cast of a 1 year old child in extraordinary high detail and calvarian cut. Due to the very special production technology even smallest details are reproduced and the model looks and feels almost like a real human skull.

Size: 15.3 x 12 x 12 cm
Ref.no. 4770





Foetal skull models

This amazing series of foetal skull reproductions is unique in the world. The extreme high quality of the models makes it difficult to distinguish between a real skull and the model. This series gives an impressive overview over the development of the skull in utero.



40 1/2 weeks **Ref.no. 4742**
40 weeks **Ref.no. 4745**
35 weeks **Ref.no. 4746**
34 weeks **Ref.no. 4747**
32 weeks **Ref.no. 4750**
31 weeks **Ref.no. 4755**

30 weeks **Ref.no. 4757**
29 weeks **Ref.no. 4760**
21 1/2 weeks **Ref.no. 4762**
20 weeks **Ref.no. 4765**
17 weeks **Ref.no. 4767**
13 weeks **Ref.no. 4768**



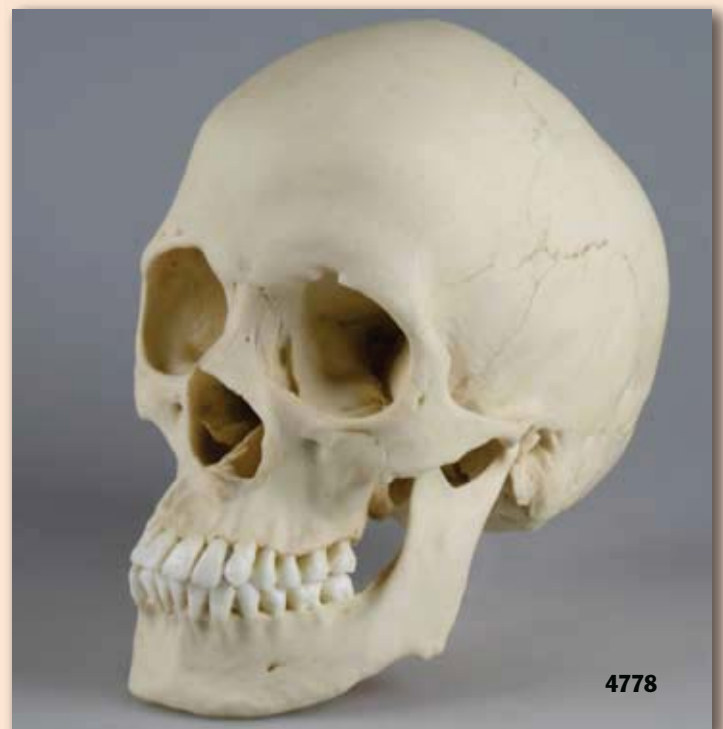
4519

Fetus skull, 30. week

This model represents a human foetal skull in the 30. week of pregnancy.

Size: 12 x 12 x 27 cm, weight: 340 g

Art.Nr. 4519



4778

Scaphocephalic skull

An excellent example of a condition in which the skull is abnormally long and narrow, as a result of premature closure of the sagittal suture, with heavy centers of ossification in the line of the suture.

Size: 20 x 20 x 11.5 cm

Ref.no. 4778



Skull stand, cervical spine

This cervical spine skull stand can be ordered as option for all skulls. Since the skull has to be adjusted to the stand it may not be used to equip your existing skull.

Ref.no. 4532

4532



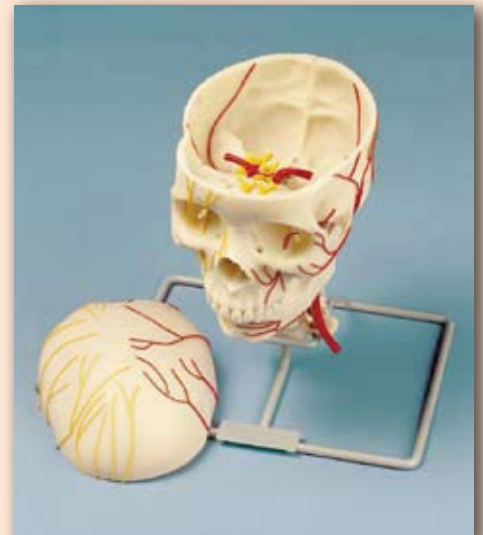
4512

Skull with masticatory muscles, 2-part

The masticatory muscles (masseter muscle, temporal muscle, pterygoideus medialis and lateralis muscles) are represented in the form of elastic bands. Using this model, it is possible to demonstrate the function of the masticatory muscles with closure of the mandible, induction of opening of the mandible and lateral and forward displacement of the mandible. The roof of the skull is removable.

Size: 23 x 16.5 x 17 cm

Ref.no. 4512



Neurovascular Skull

This model shows a life size skull with seven cervical vertebrae. The arteries are shown on one side and nerves on the other. Removing the vault exposes the main nerves and arteries inside the skull. The 12 cranial nerves and their branches are also shown. Life size.

Ref.no. 4516



4650

4650/1

Miniature skull, 3 part

Miniature of a natural skull. With mobile mandible and removable skull cap.

Size: 7.5 x 6.5 x 10 cm

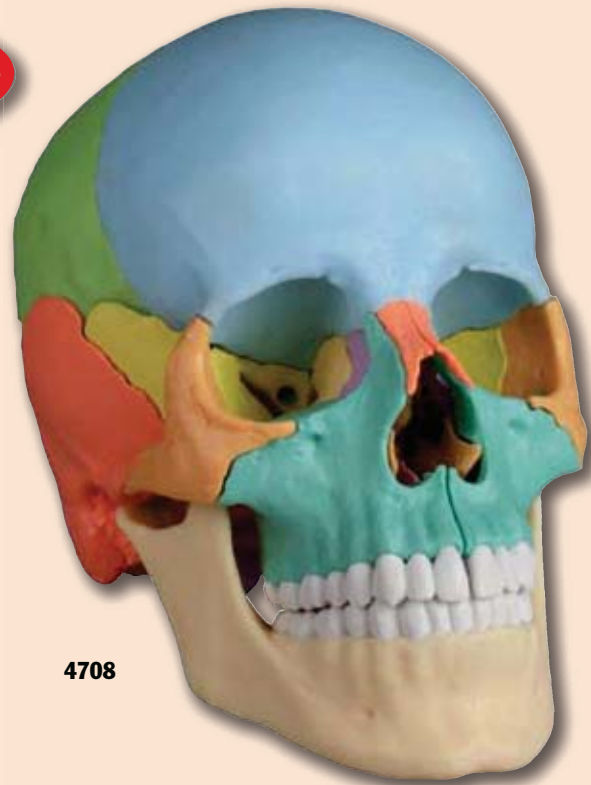
With stand Ref.no. 4650

Without stand Ref.no. 4650/1

New



4701



4708

Skull Model, 22 part

This fascinating model of an average European adult skull can be disassembled into 22 single bones. During development of this model one of the main targets was to make the model easy to assemble and dismantle. Stable parts with convenient magnet connections make handling of the product a child's play. The detailed bones do not need any complicated pins to be stuck into holes, they almost slide into position, guided by realistic bone sutures and held by strong magnets. The perfect tool for Osteopaths.

The following bones are represented:

- Parietal bone left and right
- Occipital bone
- Temporal bone left and right
- Sphenoid bone
- Frontal bone
- Ethmoid bone
- Vomer
- Palatine bone, left and right
- Inferior nasal concha left and right
- Maxilla with teeth, left and right
- Lacrimal bone left and right
- Nasal bone left and right
- Zygomatic bone left and right
- Mandible with teeth

Supplied with users guide in English and German as well as a CD with Key card document in Latin, German, English, French, Spanish, Portuguese, Italian, Polish, Russian, Arabic, Korean and Japanese.

Anatomical version

Model in natural bone colour.

Ref.no. 4701

Didactical version

This version is perfect for visual distinction of the single bones. The bones are produced in different colours, commonly used in anatomy, geminate bones do have identical colour.

Ref.no. 4708

Super
Unique in the world!
Magnetic connectors
Easy to handle

